

CombiNumerals™ Pro

*A Unique Font for Creating Circled
Letters and Numerals*

Featuring CombiSymbols
A new collection of symbols fonts



CombiNumerals Pro 4.0

FontSite Inc. proudly introduces CombiNumerals Pro, a new collection of symbol fonts designed for CD and DVD labeling, web graphics, Flash animation, instructional design and documentation, maps, signs, packaging, office forms and more.

CombiNumerals Pro is the commercial update to Sean Cavanaugh's popular freeware font *CombiNumerals*, which is available on the FontSite 500 CD as well as from software download sites all over the internet. The Pro package adds new features, hundreds more symbols, logos and icons, as well as five new symbol fonts in the *CombiSymbols* family.

Numeric Characters

Like the freeware version, CombiNumerals Pro lets you create any single or double-digit number within a circle, but the Pro version also gives you the ability to create numbers with as many digits as you like.

SINGLE-DIGIT NUMBERS The numbers ① through ⑨ and ⑩ are located on the *qwertyuiop* row of keys (respectively) on a US keyboard. For example, to create the number ①, press the *q* key; to create the number ②, press the *w* key; and so on.

DOUBLE-DIGIT NUMBERS The numbers ⑩ through ⑨⑨ are created by first typing a number key, followed by Shift-number. For example, to create the number ⑥⑨, press the *6* key, then press *Shift-9*.

Because double-digit numbers beginning with ① can be problematic when it comes to spacing, pre-formed alternates for the numbers ⑩ through ⑱ are provided along the *asdfghjkl;* row of keys (respectively) on a US keyboard. You can still type them as you would other double-digit numbers, but you may find the alternates more visually attractive.

3+DIGIT NUMBERS You can create numbers of three or more digits within an oval. The first and last digits are created as described above. The interior digits 1 through 9 and zero are located on the *zxcvbnm,./* (bottom) row of keys on a US keyboard. For example, to create the number ④③⑦, press the *4* key, then press the *c* key, then press *Shift-7*. You can also include plus and minus signs as well as decimal points, commas and currency symbols in your numbers.



The Bold weight of CombiNumerals lets you create numerals and symbols within solid circles and ovals.

Alphabetic Characters

New to the Pro version of CombiNumerals is the ability to create alphabetic characters within circles. The uppercase letters A–Z are created by holding down the Shift key and pressing a letter key.



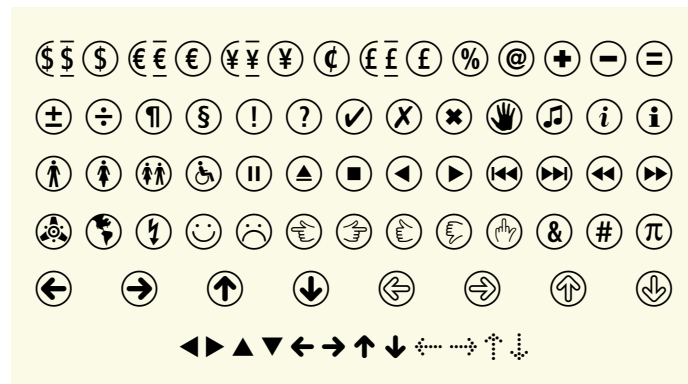
Additional Characters

In addition to numbers and letters, with CombiNumerals Pro you can create arrows, monetary symbols, emoticons and other useful symbols. Here are just a few of them:

Ⓣ ⓕ Ⓨ Ⓝ Ⓢ ⓐ Ⓛ Ⓣ Ⓢ Ⓝⓐ

Whether you agree or strongly agree, CombiNumerals Pro is perfect for creating 'bubble' forms used in surveys, evaluations and questionnaires.

Any character you type can also be a negative using a specially-created slash character. For example, the character ? becomes Ⓝ?. A similar emphasis character can be created, e.g., ? becomes Ⓝ?. Any questions?





Introducing CombiSymbols

Included in the CombiNumerals Pro package are five new symbol fonts: *CombiSymbols One, Two & Three*, each containing an assortment of symbols useful for a wide range of documents and designs such as web graphics, user manuals, Flash animation, packaging, brochures and maps, and *CombiSymbols CD and DV*, an assortment of industry symbols particularly useful for people creating artwork for CD and DVD labels, case inserts and packaging.

CombiSymbols 1, 2, 3

Below is a small sampling of characters from the CombiSymbols One, Two and Three fonts included in the CombiNumerals Pro package. Refer to the character charts for a complete listing of all glyphs and their keyboard locations.

CombiSymbols One



CombiSymbols Two



CombiSymbols Three



CombiSymbols CD

This font was designed for people creating artwork and packaging for compact discs. It contains all of the Compact Disc logos from the Phillips "Color" books (official specifications), plus many other media symbols and logos appropriate for audio, data, software CDs and more. Here are just a few of the symbols included in the font:



CombiSymbols DV

This font contains all of the official DVD logos, plus surround sound logos, a complete collection of sound mode icons and more. Below are just a few of the symbols you can create with CombiSymbols DV:



Installing Fonts

The CombiNumerals Pro font package is distributed as a compressed zip archive. The first thing you'll need to do is expand this archive (and if you're reading this, you've probably already done so). When you expand the archive, a folder is created named "CombiNumerals Pro" that contains all of the fonts. Install the fonts just as you would other fonts. I.e., open the CombiNumerals Pro folder and copy the fonts within it to the Windows\Fonts folder. You can accomplish the same thing by opening the Fonts control panel (Start menu > Control Panel > Fonts). Choose the "Install New Font" command from the File menu, navigate to the CombiNumerals Pro folder that was created when you expanded the zip archive, select all and click OK. If you are using a third-party font manager such as ATM Deluxe, Suitcase, etc., refer to its documentation for font installation instructions.

After you've installed the fonts, they will appear in the font menus of your programs and you can begin using them immediately. Refer to the character charts on the following pages to see a complete listing of all available characters and the keystrokes required to insert them in your documents.

Price & Availability

The CombiNumerals Pro package (including all of the CombiSymbols fonts) is available for both Mac OS and Windows users in TrueType, PostScript Type 1 or OpenType formats. The fonts can be purchased and downloaded immediately from the FontSite. They are also available from MyFonts.com and SureThing.com.

For more information about the CombiNumerals Pro package, as well as our other font products, please visit us on the web at www.fontsite.com.



2787 Sandy Drive
Camano Island, Wash. 98282

info@fontsite.com
www.fontsite.com

FontSite, the FontSite logo, CombiNumerals and CombiSymbols are trademarks of FontSite Inc. All other trademarks are the property of their respective owners.

CombiNumerals Pro Characters

~	1	2	3	4	5	6	7	8	9	0	-	=	Delete
⌘	①	②	③	④	⑤	⑥	⑦	⑧	⑨	⑩	⋮	⋮	
Tab	q	w	e	r	t	y	u	i	o	p	[]	\
①	②	③	④	⑤	⑥	⑦	⑧	⑨	⑩	()	/	
Caps Lock	a	s	d	f	g	h	j	k	l	;	'	Return	
⑩	⑪	⑫	⑬	⑭	⑮	⑯	⑰	⑱	⑲	✓			
Shift	z	x	c	v	b	n	m	,	.	/		Shift	
	①	②	③	④	⑤	⑥	⑦	⑧	⑨	⑩			

~	!	@	#	\$	%	^	&	*	()	-	+	Delete
⌘	①	②	③	④	⑤	⑥	⑦	⑧	⑨	⑩	⋈	⋈	
Tab	Q	W	E	R	T	Y	U	I	O	P	{	}	
Ⓚ	Ⓦ	ⓔ	Ⓡ	Ⓣ	Ⓨ	Ⓤ	Ⓛ	Ⓚ	Ⓛ	Ⓟ	[]	-
Caps Lock	A	S	D	F	G	H	J	K	L	:	"	Return	
Ⓐ	Ⓢ	Ⓓ	Ⓕ	Ⓖ	Ⓗ	Ⓙ	Ⓚ	Ⓛ	Ⓝ	Ⓧ			
Shift	Z	X	C	V	B	N	M	<	>	?		Shift	
	Ⓩ	Ⓧ	ⓒ	Ⓥ	Ⓑ	Ⓝ	Ⓜ	.	-	⋮			

Tip: Characters marked with a blue square let you modify the space between numerals and symbols, as well as create different enclosures. For example:

⑥ ⑥ 65 \$6 \$6

⑥ ⑥ 65 \$6 \$6

Characters marked with a red square are zero-width characters that let you create negatives. For example:

~~Ⓟ~~ ~~Ⓜ~~

Additional characters from CombiNumerals Pro

Keystroke	Keystroke	Keystroke			
	Alt 0130		Alt 0191		Alt 0223
	Alt 0131		Alt 0192		Alt 0224
	Alt 0132		Alt 0193		Alt 0225
	Alt 0134		Alt 0194		Alt 0226
	Alt 0135		Alt 0195		Alt 0227
	Alt 0137		Alt 0197		Alt 0229
	Alt 0139		Alt 0198		Alt 0230
	Alt 0140		Alt 0199		Alt 0231
	Alt 0149		Alt 0200		Alt 0232
	Alt 0153		Alt 0201		Alt 0233
	Alt 0155		Alt 0202		Alt 0234
	Alt 0156		Alt 0203		Alt 0236
	Alt 0161		Alt 0204		Alt 0237
	Alt 0162		Alt 0205		Alt 0241
	Alt 0163		Alt 0206		Alt 0242
	Alt 0164		Alt 0207		Alt 0243
	Alt 0165		Alt 0209		Alt 0244
	Alt 0167		Alt 0210		Alt 0245
	Alt 0169		Alt 0211		Alt 0246
	Alt 0170		Alt 0212		Alt 0247
	Alt 0171		Alt 0213		Alt 0248
	Alt 0174		Alt 0214		Alt 0249
	Alt 0177		Alt 0216		Alt 0250
	Alt 0181		Alt 0217		Alt 0251
	Alt 0182		Alt 0218		Alt 0252
	Alt 0186		Alt 0219		Alt 0255
	Alt 0187		Alt 0220		

The most commonly used CombiNumerals characters can be typed directly from standard keyboard keys. Many characters, however, are located in positions beyond the standard slots and require the use of "Alt" key combinations to create them.

WINDOWS USERS: Hold down the Alt key and type the combination from the numeric keypad. When you release the Alt key, the character corresponding to that combination is created.

CombiSymbols One Characters

~	1	2	3	4	5	6	7	8	9	0	-	=	Delete
Tab	q	w	e	r	t	y	u	i	o	p	[]	\
Caps Lock	a	s	d	f	g	h	j	k	l	;	'	Return	
Shift	z	x	c	v	b	n	m	,	.	/	Shift		

~	!	@	#	\$	%	^	&	*	()	-	+	Delete
Tab	Q	W	E	R	T	Y	U	I	O	P	{	}	
Caps Lock	A	S	D	F	G	H	J	K	L	:	"	Return	
Shift	Z	X	C	V	B	N	M	<	>	?	Shift		

CombiSymbols Two Characters

~	1	2	3	4	5	6	7	8	9	0	-	=	Delete
Tab	q	w	e	r	t	y	u	i	o	p	[]	\
Caps Lock	a	s	d	f	g	h	j	k	l	;	'	Return	
Shift	z	x	c	v	b	n	m	,	.	/	Shift		

~	!	@	#	\$	%	^	&	*	()	-	+	Delete
Tab	Q	W	E	R	T	Y	U	I	O	P	{	}	
Caps Lock	A	S	D	F	G	H	J	K	L	:	"	Return	
Shift	Z	X	C	V	B	N	M	<	>	?	Shift		

CombiSymbols Three Characters

⌂	1	2	3	4	5	6	7	8	9	0	-	=	Delete	
	Tab	q	w	e	r	t	y	u	i	o	p	[]	\
	Caps Lock	a	s	d	f	g	h	j	k	l	;	'	Return	
	Shift	z	x	c	v	b	n	m	,	.	/		Shift	

~	!	@	#	\$	%	^	&	*	()	_	+	Delete	
	Tab	Q	W	E	R	T	Y	U	I	O	P	{	}	
	Caps Lock	A	S	D	F	G	H	J	K	L	:	"	Return	
	Shift	Z	X	C	V	B	N	M	<	>	?		Shift	

7	8	9
↙	↑	↗
4	5	6
↖	↔	↘
1	2	3
↙	↓	↘

Tip: The arrows characters at left are assigned to number keys in such a way that the numeric keypad provides a mnemonic device.

CombiSymbols CD Characters

1	2	3	4	5	6	7	8	9	0	-	=	Delete	
Tab	q	w	e	r	t	y	u	i	o	p	[]	\
Caps Lock	a	s	d	f	g	h	j	k	l	;	'	Return	
Shift	z	x	c	v	b	n	m	,	.	/		Shift	

~	!	@	#	\$	%	^	&	*	()	-	+	Delete
Tab	Q	W	E	R	T	Y	U	I	O	P	{	}	
Caps Lock	A	S	D	F	G	H	J	K	L	:	"	Return	
Shift	Z	X	C	V	B	N	M	<	>	?		Shift	

Additional characters from CombiSymbols CD

Keystroke	Keystroke	Keystroke			
	Alt 0133		Alt 0193		Alt 0209
	Alt 0151		Alt 0194		Alt 0210
TM	Alt 0153		Alt 0195		Alt 0211
	Alt 0161		Alt 0196		Alt 0212
	Alt 0162		Alt 0197		Alt 0213
	Alt 0163		Alt 0198		Alt 0214
	Alt 0164		Alt 0199		Alt 0215
	Alt 0165		Alt 0200		Alt 0216
CHROME 120 µs EO	Alt 0166		Alt 0201	Audio	Alt 0224
SM	Alt 0167		Alt 0202	Video	Alt 0225
©	Alt 0169		Alt 0203	Text	Alt 0226
®	Alt 0174		Alt 0204	Pix	Alt 0227
	Alt 0176		Alt 0205		
Real	Alt 0192		Alt 0206		

Most of the CombiSymbols characters can be typed directly from standard keyboard keys as shown above. Some characters, however, are located in positions beyond the standard slots and require the use of "Alt" key combinations to create them.

WINDOWS USERS: Hold down the Alt key and type the combination from the numeric keypad. When you release the Alt key, the character corresponding to that combination is created.

CombiSymbols DV Characters

1	2	3	4	5	6	7	8	9	0	-	=	Delete	
Tab	q	w	e	r	t	y	u	i	o	p	[]	\
Caps Lock	a	s	d	f	g	h	j	k	l	;	'	Return	
Shift	z	x	c	v	b	n	m	,	.	/		Shift	

~	!	@	#	\$	%	^	&	*	()	-	+	Delete
Tab	Q	W	E	R	T	Y	U	I	O	P	{	}	
Caps Lock	A	S	D	F	G	H	J	K	L	:	"	Return	
Shift	Z	X	C	V	B	N	M	<	>	?		Shift	

Additional characters from CombiSymbols DV

Keystroke	Keystroke	Keystroke			
	Alt 0133		Alt 0197		Alt 0223
	Alt 0150		Alt 0198		Alt 0224
	Alt 0151		Alt 0204		Alt 0225
	Alt 0153		Alt 0209		Alt 0226
	Alt 0164		Alt 0210		Alt 0227
	Alt 0165		Alt 0211		Alt 0228
	Alt 0166		Alt 0212		Alt 0229
SM	Alt 0167		Alt 0213		Alt 0230
	Alt 0169		Alt 0214		Alt 0231
	Alt 0174		Alt 0215		Alt 0232
	Alt 0176		Alt 0216		Alt 0233
	Alt 0192		Alt 0217		Alt 0234
	Alt 0193		Alt 0218		Alt 0235
	Alt 0195		Alt 0219		Alt 0236
	Alt 0196		Alt 0220		Alt 0237

Most of the CombiSymbols characters can be typed directly from standard keyboard keys as shown above. Some characters, however, are located in positions beyond the standard slots and require the use of "Alt" key combinations to create them.

WINDOWS USERS: Hold down the Alt key and type the combination from the numeric keypad. When you release the Alt key, the character corresponding to that combination is created.